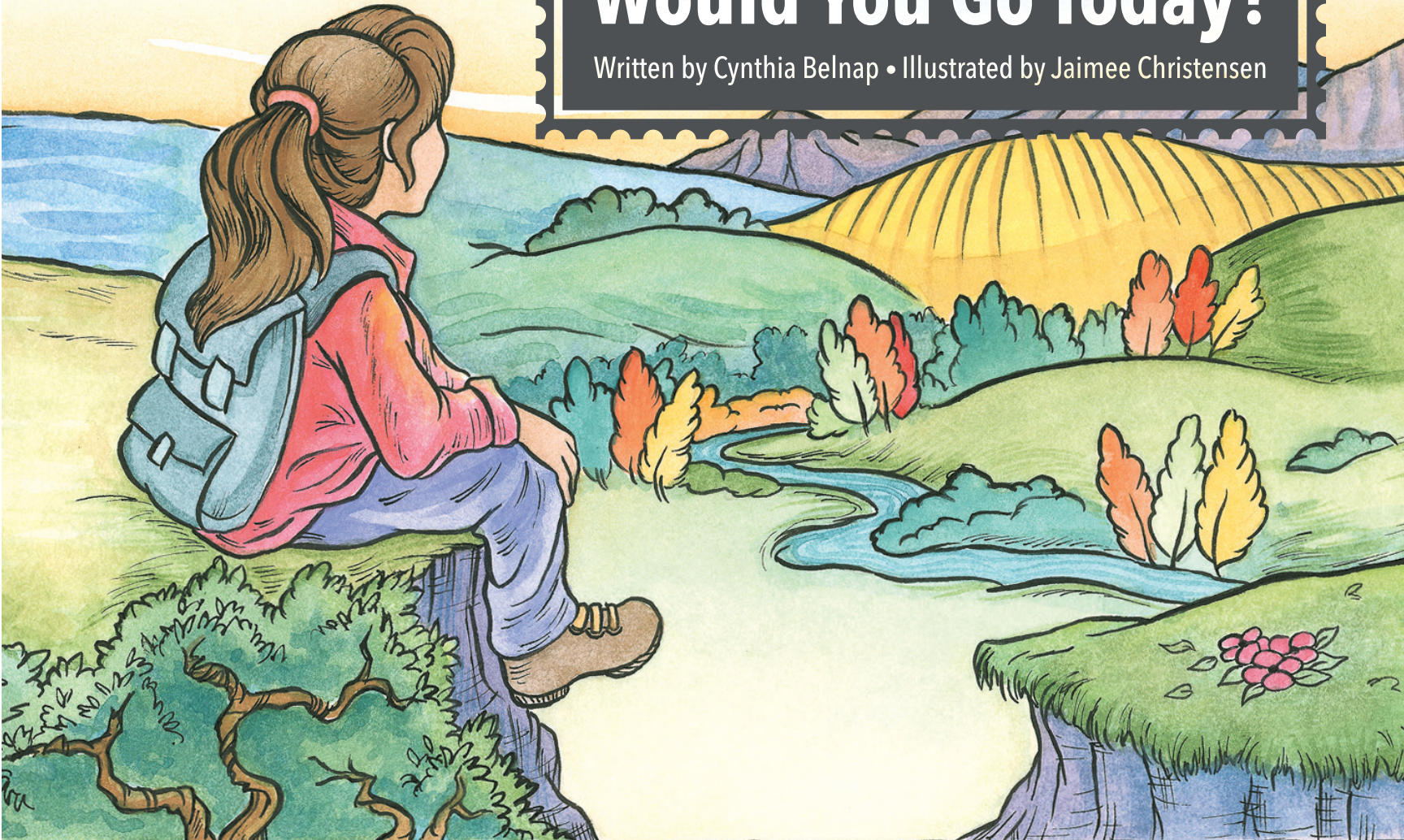


Where in the World Would You Go Today?

Written by Cynthia Belnap • Illustrated by Jaimee Christensen

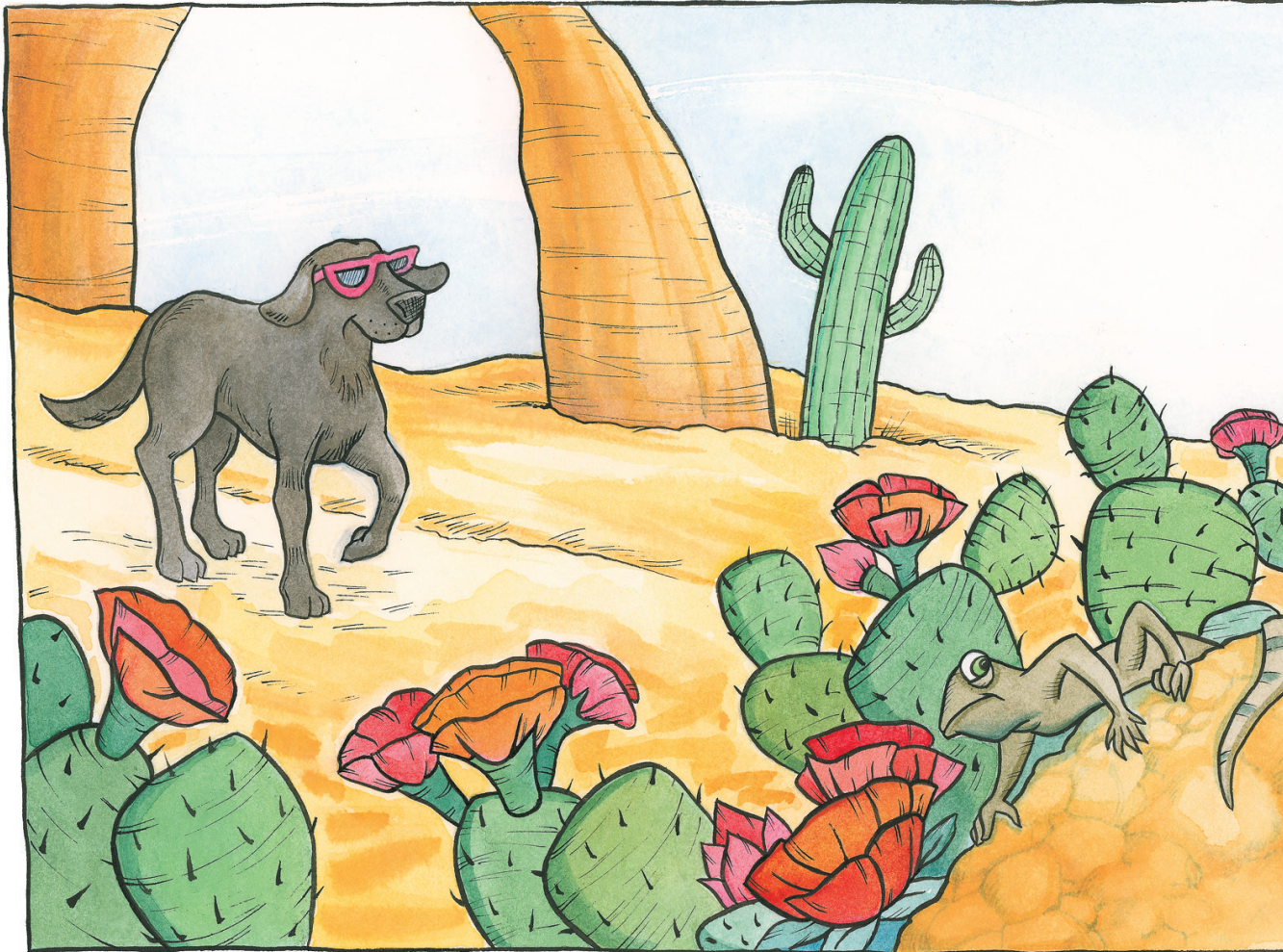




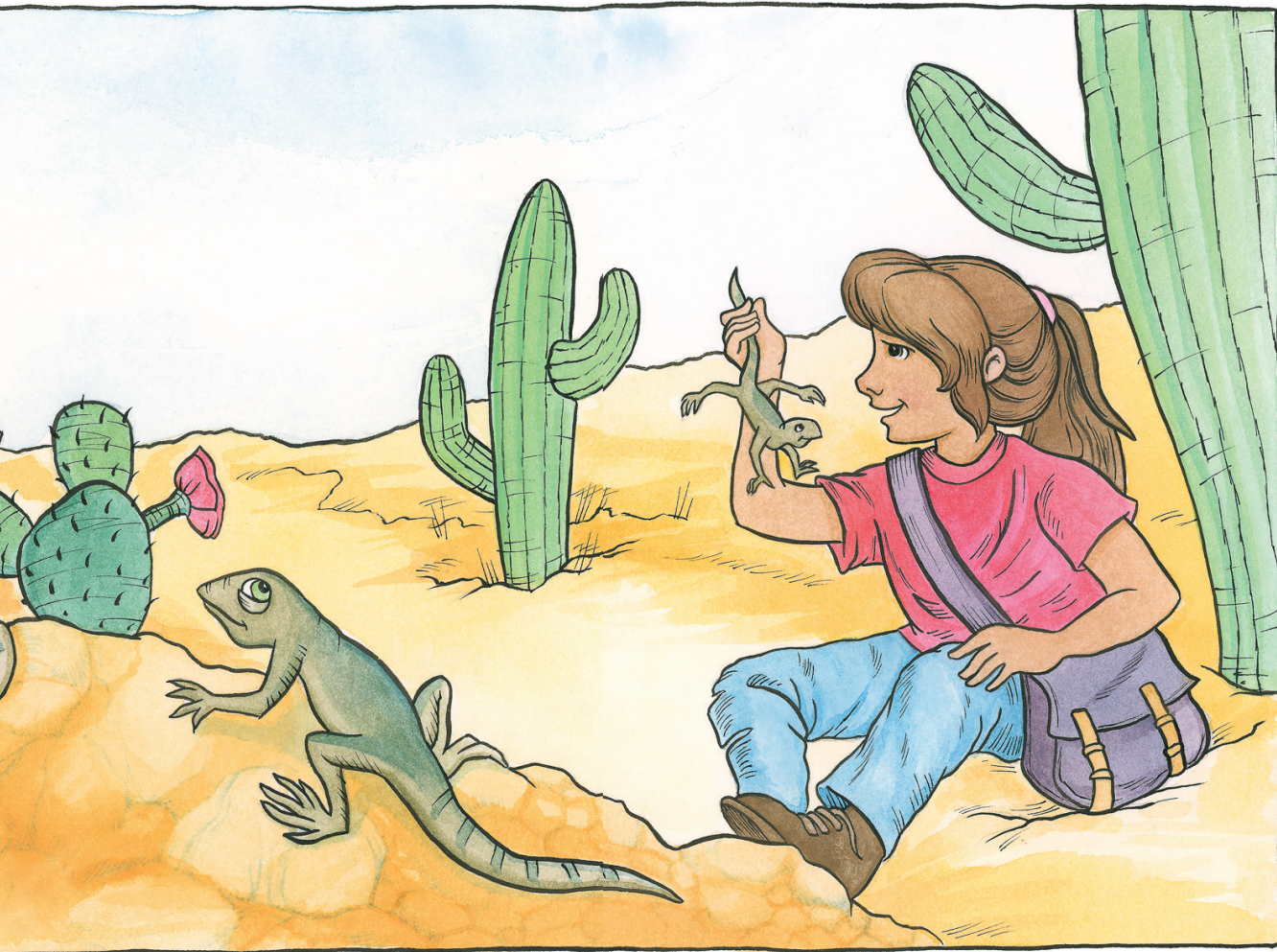
Where in the world would you go today?
What would you like to see?



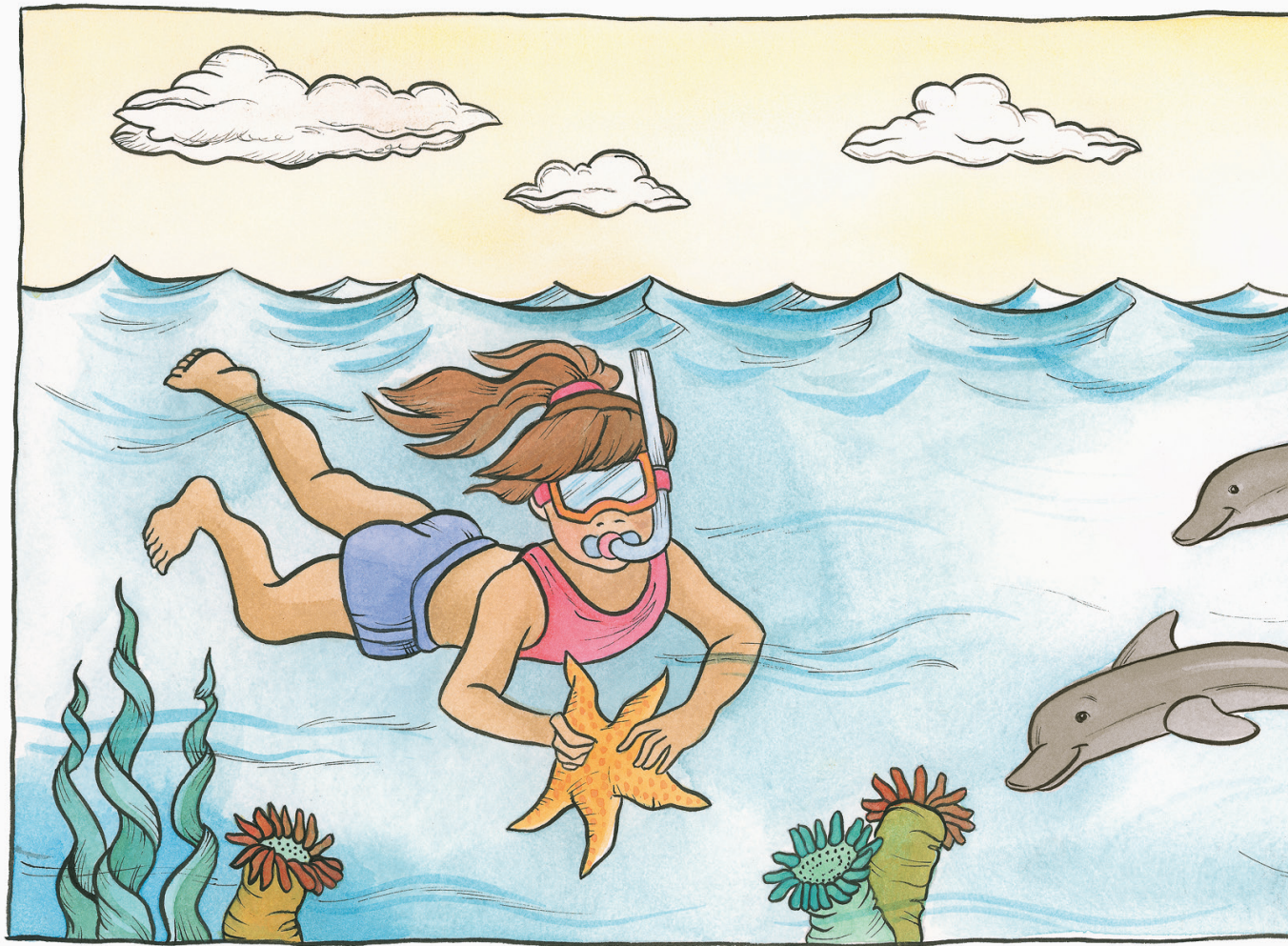
There are so many places to visit.
It is hard to decide, I agree!



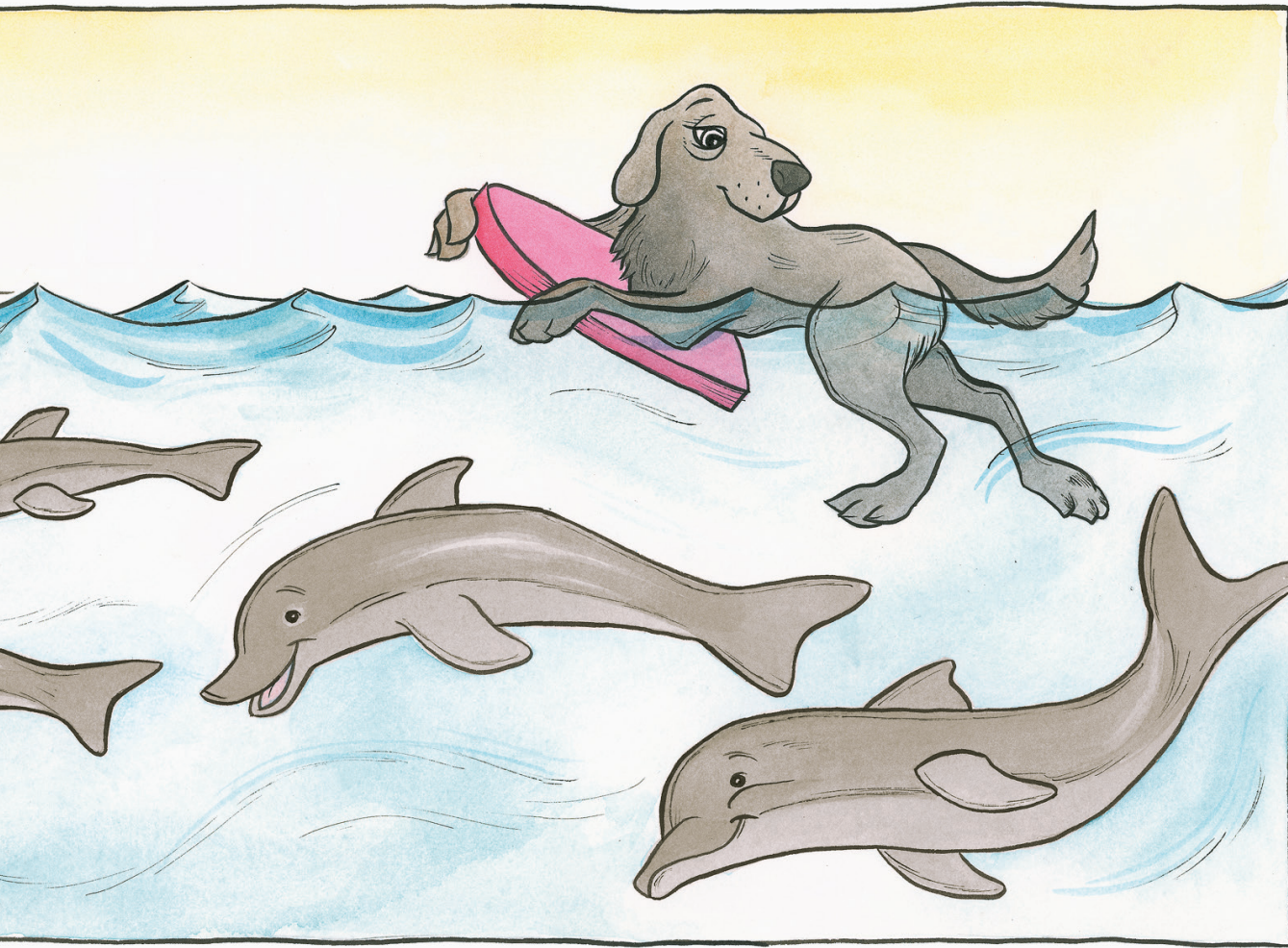
Would you go to the hot, dry desert
and walk through the sand in the sun?



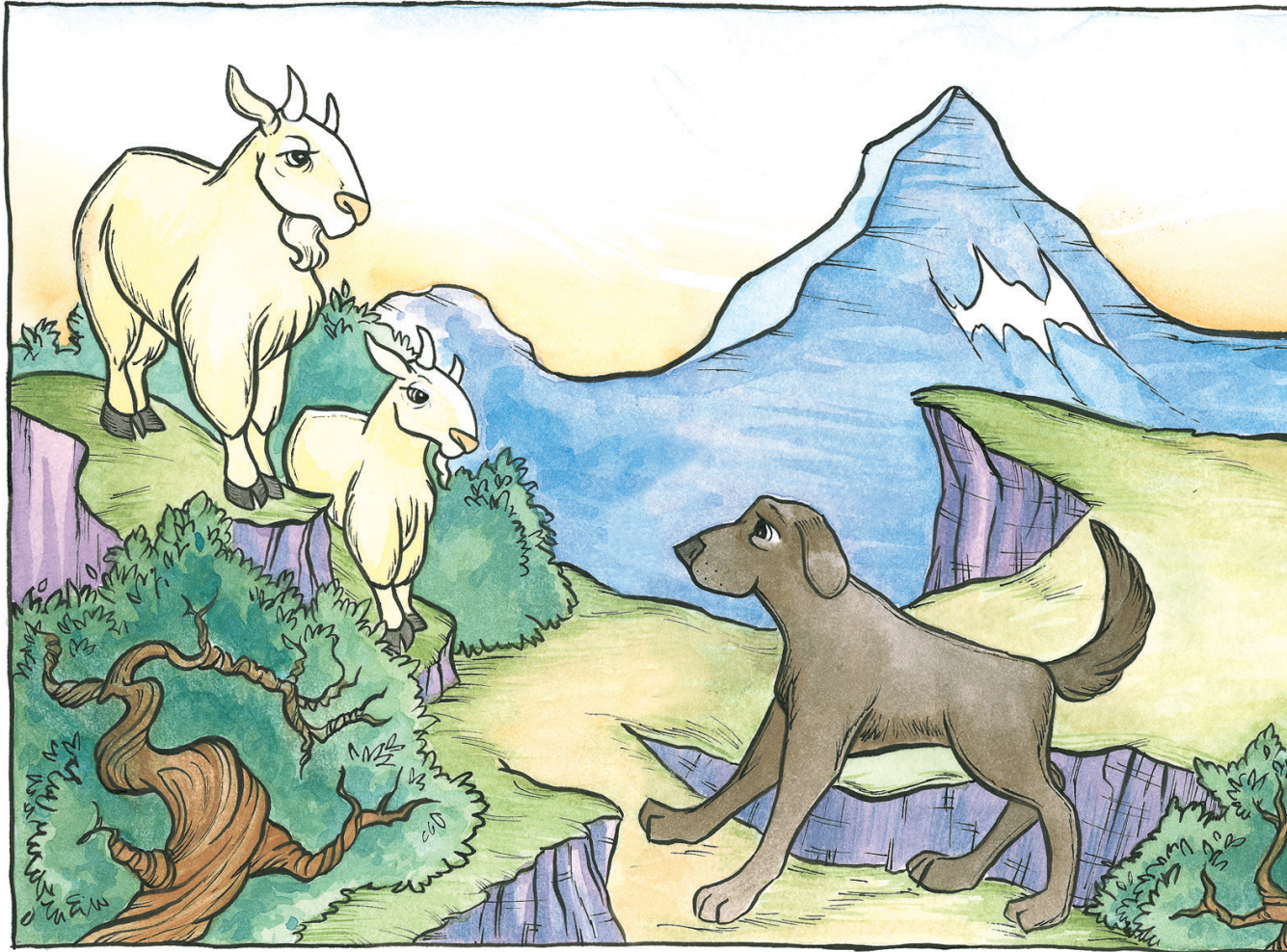
Would you sit in the shade of a cactus
and watch the small lizards run?



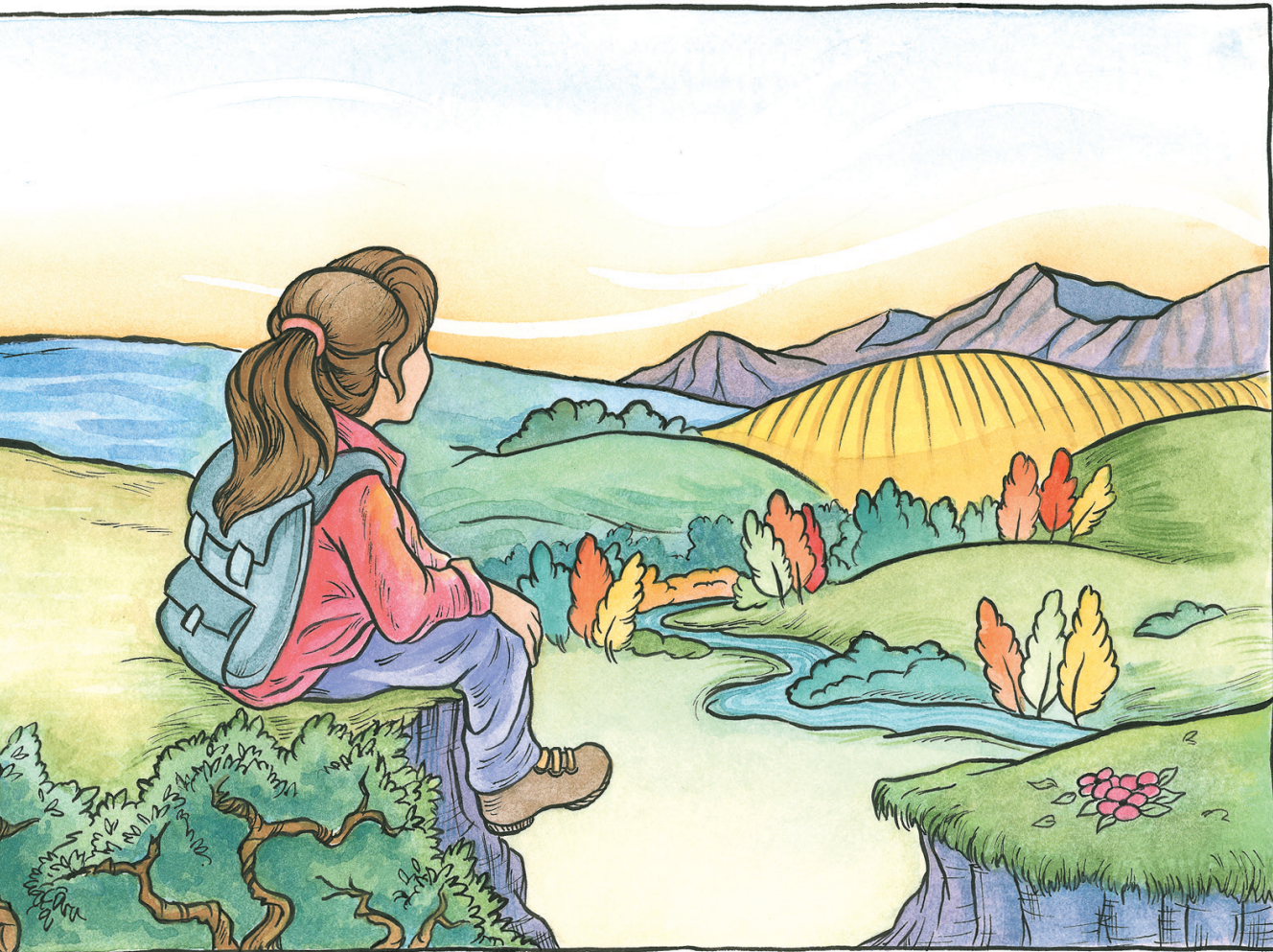
Would you go to the wet, salty ocean
and swim in the water so deep?



Would you ride on the waves when it's windy
and watch the gray dolphins leap?



Would you hike up a rocky, steep mountain,
up high where the trees don't grow?



Would you sit on a rock, like an eagle,
and look at the valley below?



Would you visit the green rainforest
with monkeys in trees up high?



Would you rest by the edge of a river
and watch all the bright birds fly?



Where in the world would you go today?
What would you like to see?
Anywhere that you went in the world
would be a great place to be!

Math & Science

Ecosystems

Copyright © Waterford Institute, Inc.

All rights reserved. No part of this publication may be reproduced, stored in a retrieval system, or transmitted, in any form or by any means, electronic, mechanical, photocopying, recording, or otherwise, without the prior written permission of the publisher.

**Published and distributed by Waterford Institute, Inc.,
Sandy, Utah.**

Waterford.org seeks to blend the best aspects of learning science, mentoring relationships, and innovative technologies to form community, school, and home programs that deliver excellence and equity for all learners.

Printed in the United States of America.

ISBN 978-1-4256-0298-7

Waterford™, Waterford Institute™, Waterford A Nonprofit Research Center™, Waterford.org™, Light Atom logo®, Rusty and Rosy®, Waterford Early Learning®, Waterford Early Learning logo™, Waterford Reading Academy™, Waterford Early Reading Program®, Waterford Early Reading Program logo®, Waterford Early Math and Science™, Waterford Early Math & Science logo™, Waterford Early Learning: Reading™, Waterford Early Learning: Math & Science™, Waterford Early Learning: Classroom Advantage™, Waterford Early Learning: SmartStart™, Waterford UPSTART™, WACS™, Camp Consonant®, and Curriculet™ are trademarks of Waterford Institute, Inc. in the United States and other countries and are used pursuant to a license with Waterford Institute, Inc.

