

Mary Had a Little Lamb

Mary tenía un borreguito

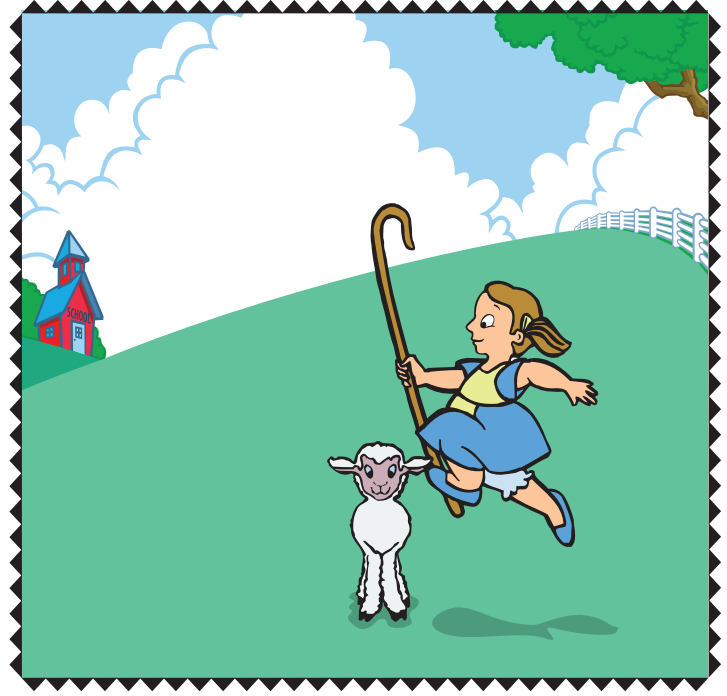


Una canción de cuna tradicional
Ilustrado por Kathy Burton y Rodney Bills
Traducido por Daisy Bratcher

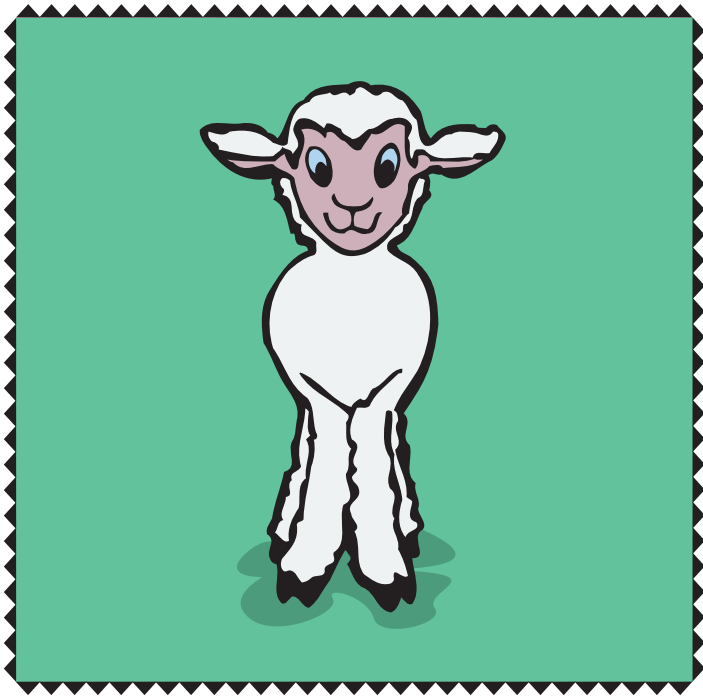
© Waterford Institute, Inc.



Its fleece was white as snow.
Su lana era tan blanca como la nieve.



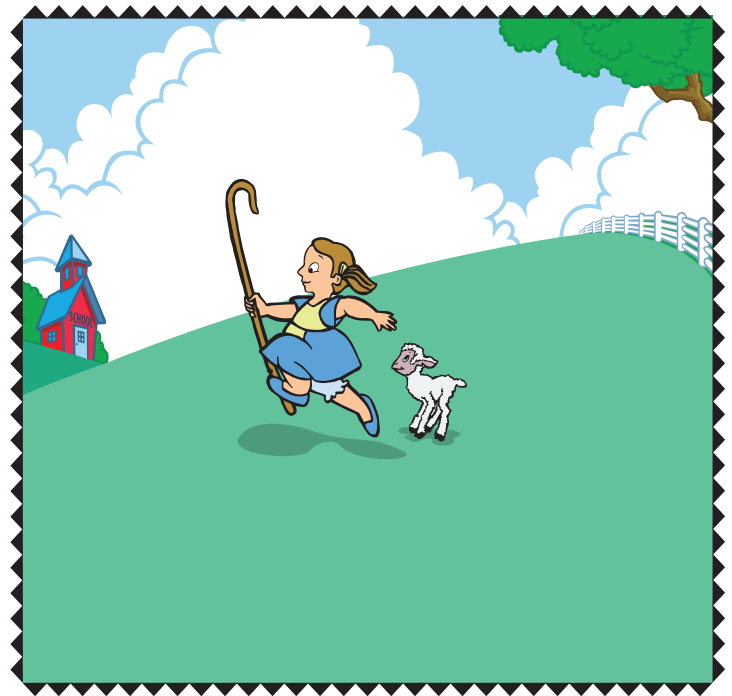
Everywhere that Mary went,
Mary went, Mary went.
A dondequiera que iba Mary,
a dondequiera, a donde quiera.



Mary had a little lamb,
little lamb, little lamb.

Mary tenía un borreguito,
un borreguito, un borreguito.

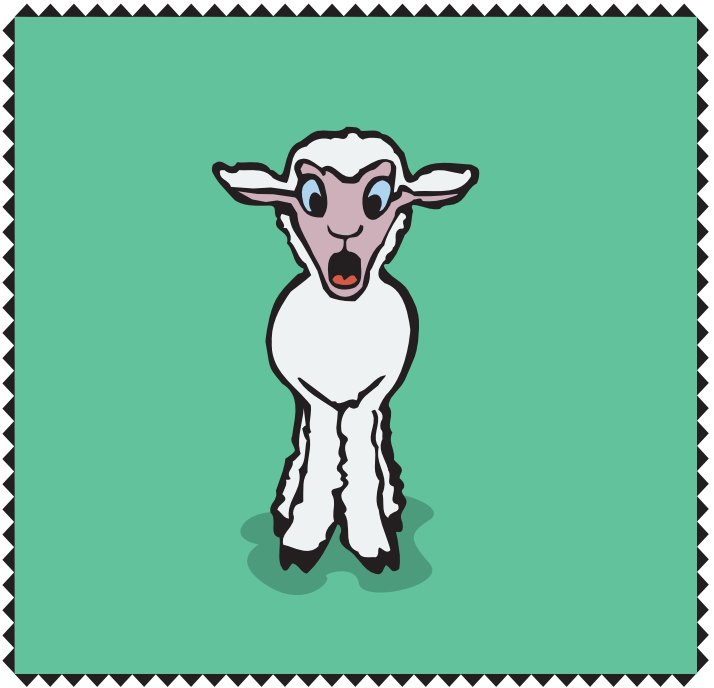
1



The lamb was sure to go.

El borrego de seguro la seguía.

6



Everywhere that Mary went
A dondequiera que iba Mary

5



Mary had a little lamb,
Mary tenía un borreguito,

2