

Where's the Sound?

Beginning, Middle, and End

LOWERCASE LETTER CARDS

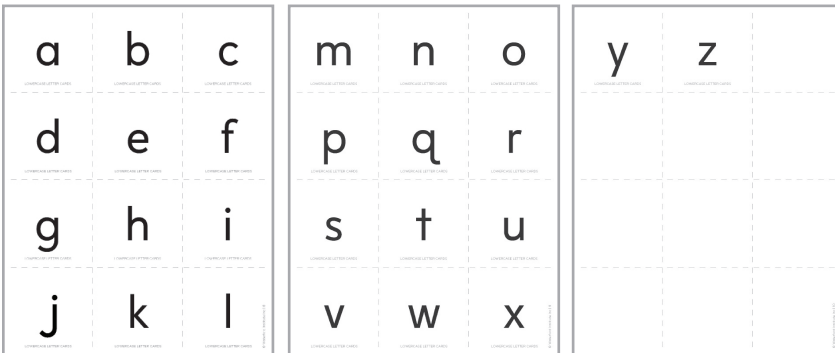
ACTIVITY INSTRUCTIONS

What You'll Need

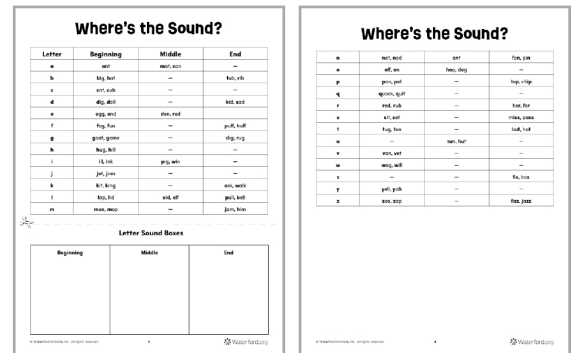
- [Lowercase Letter cards](#)

How to Play

1. Choose a letter card (for example, *t*). Ask your child to tell you the sound the letter makes (/t/).
2. From the **Where's the Sound?** chart below, choose a word that contains that letter. For example, *cat*. Do not show the word to your child.
3. Say the word slowly and clearly.
4. Ask your child to place the letter card in the "letter sound box" that matches the place where they hear the sound in the word. For example, *t* would be placed in the third box because /t/ is heard at the end of the word *cat*.
5. Next, write the word on the whiteboard. Say the word and the letter sound (*cat*, /t/). Ask your child to say the sound with you and point to the letter that makes that sound.
6. For a challenge, say all of the sounds in the word and practice blending the sounds together (/k/ /a/ /t/, *cat*).



Lowercase Letter cards



Where's the Sound?

Where's the Sound?

Letter	Beginning	Middle	End
a	ant	mat, can	—
b	big, bat	—	tub, rib
c	cat, cub	—	—
d	dig, doll	—	kid, sad
e	egg, end	den, red	
f	fog, fun	—	puff, huff
g	goat, game	—	dig, rug
h	hug, hill	—	—
i	ill, ink	pig, win	—
j	jet, jam	—	—
k	kit, king	—	ask, walk
l	lap, lid	old, elf	pull, bell
m	men, mop	—	jam, him



Letter Sound Boxes

Beginning	Middle	End

Where's the Sound?

n	net, nod	ant	fan, pin
o	off, on	hop, dog	—
p	pan, pet	—	top, chip
q	quack, quit	—	—
r	red, rub	—	her, for
s	sit, set	—	miss, pass
t	tug, ten	—	bat, hot
u	—	sun, hut	—
v	van, vet	—	—
w	wag, will	—	—
x	—	—	fix, box
y	yell, yolk	—	—
z	zoo, zap	—	fizz, jazz