

# Tarjetas de Sentido del Sonido

Pares de rimas - claves de las respuestas



cat



hat



rat



jet



net



vet



fig



pig



wig



dog



frog



log



cake



rake



snake



mop



stop



top



bug



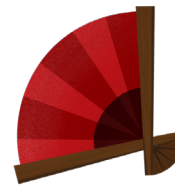
jug



rug



can



fan



van



dice



ice



mice



mail



nail



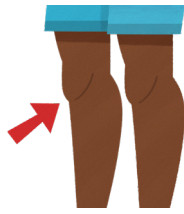
snail

# Tarjetas de Sentido del Sonido

Pares de rimas - claves de las respuestas



bee



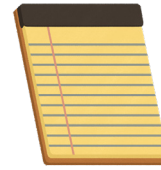
knee



tree



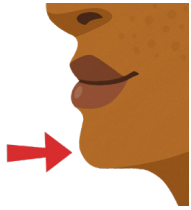
mad



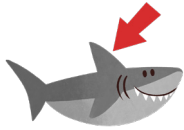
pad



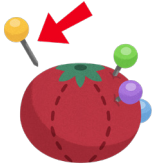
sad



chin



fin



pin



hen



pen



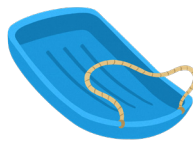
ten



bed



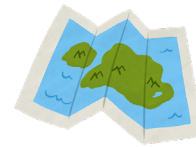
red



sled



clap



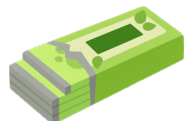
map



tap



drum



gum



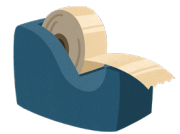
plum



cape



grape



tape



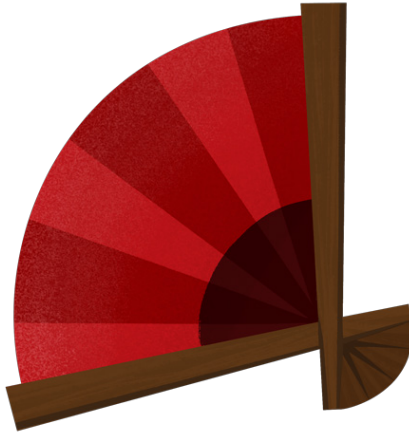
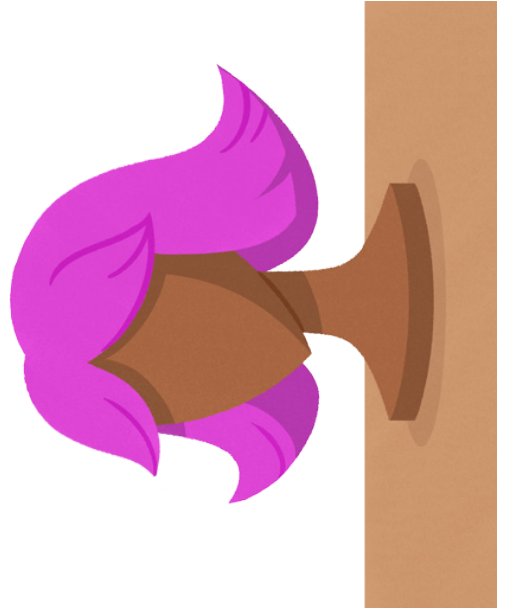
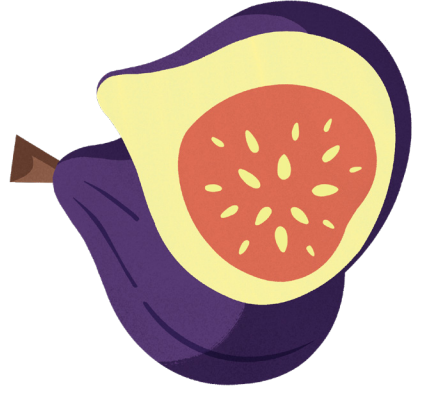
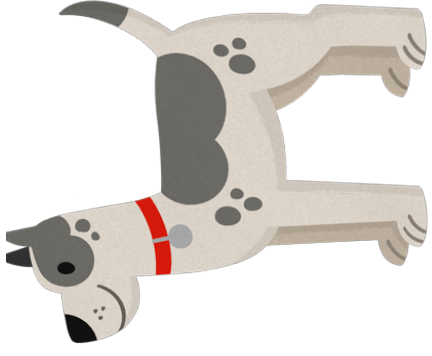
hose

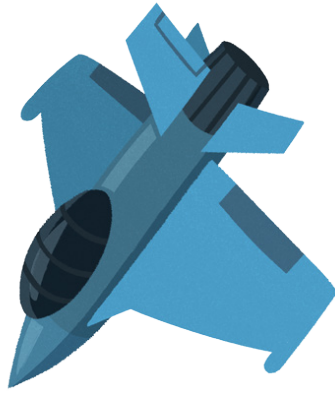
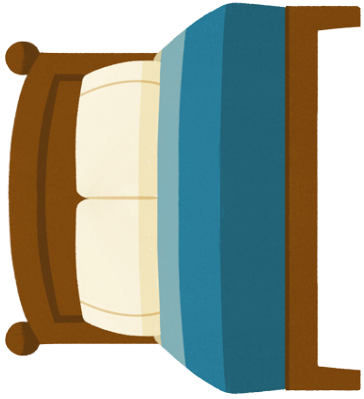
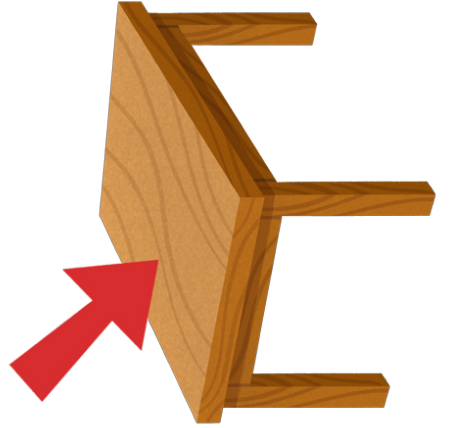
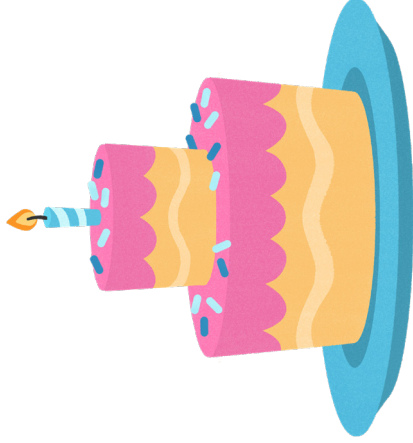
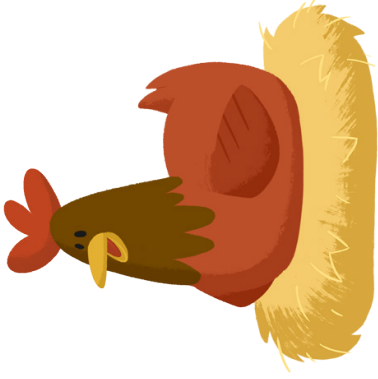


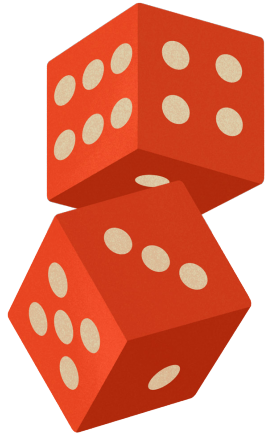
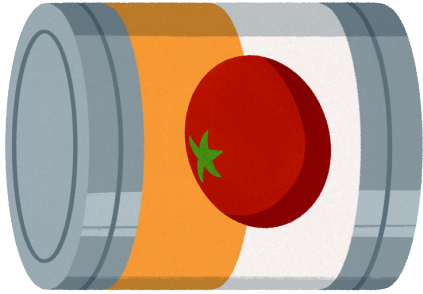
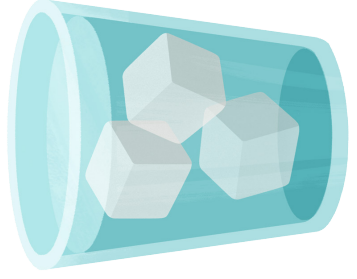
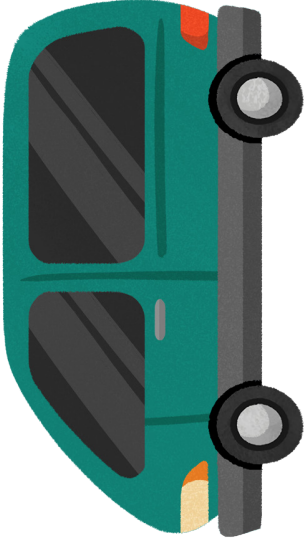
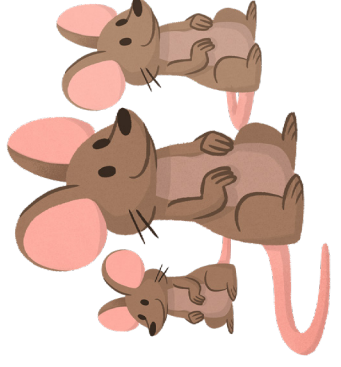
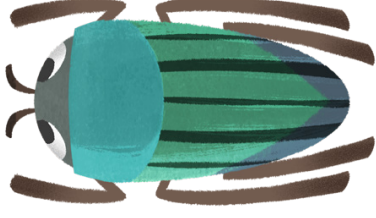
nose

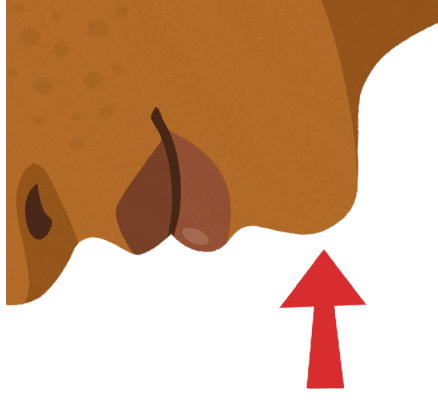


rose









10

